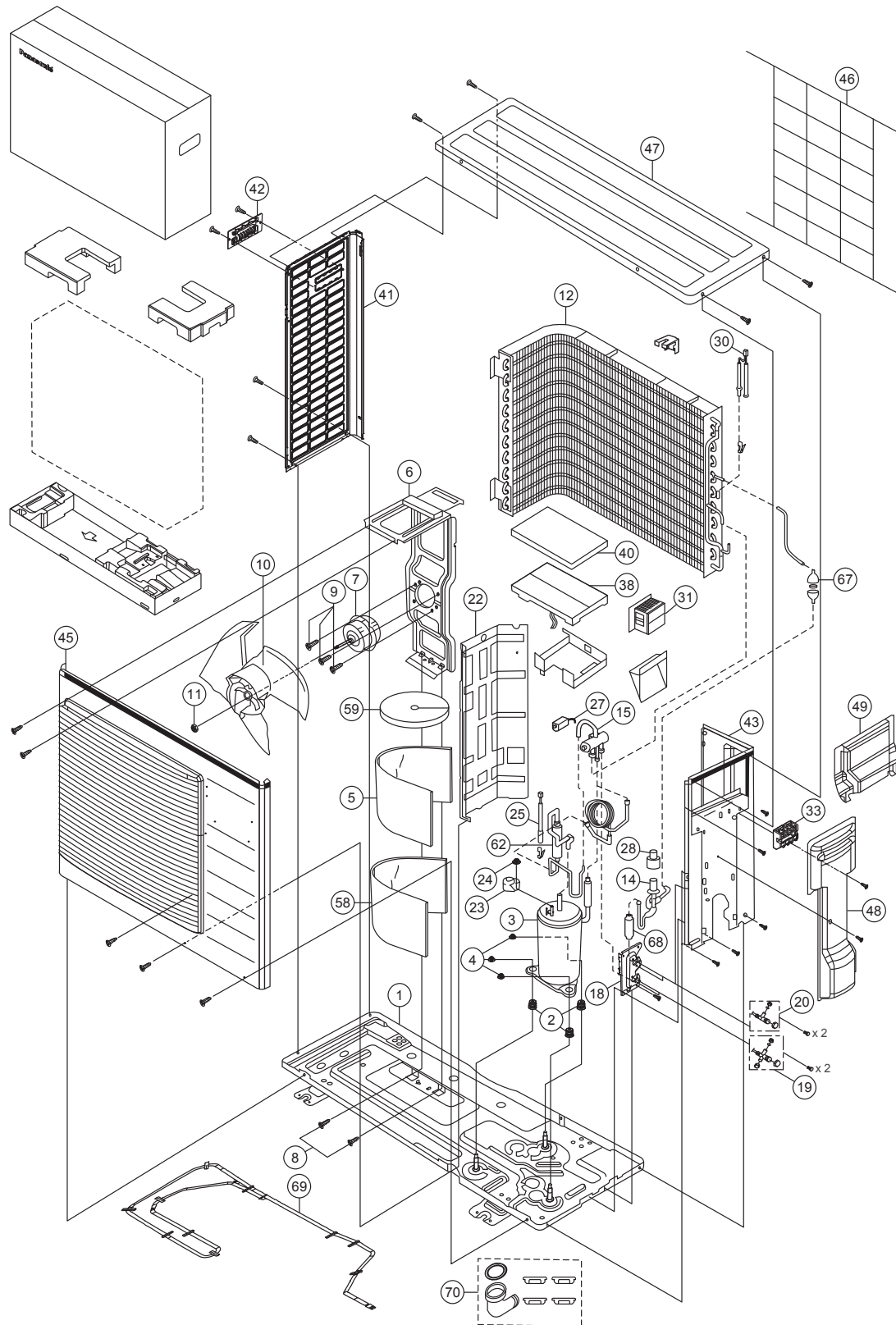


File No.

Air Conditioner

19.2 Outdoor Unit



Note

The above exploded view is for the purpose of parts disassembly and replacement. The non-numbered parts are not kept as standard service parts.

SAFETY	REF. NO.	PART NAME & DESCRIPTION	QTY.	CU-XE9SKUA	CU-XE12SKUA	REMARK
	1	CHASSIS COMPLETE	1	ACXD52K00130A	←	
	2	ANTI - VIBRATION BUSHING	3	CWH50077	←	
⚠	3	COMPRESSOR	1	5RS102XHB21	←	O
	4	NUT - COMPRESSOR MOUNT	3	CWH561096	←	
	5	SOUND PROOF MATERIAL	1	CWG302850	←	
	6	FAN MOTOR BRACKET	1	CWD541153	←	
⚠	7	FAN MOTOR	1	ARW8407AC	←	O
	8	SCREW - FAN MOTOR BRACKET	2	CWH551217	←	
	9	SCREW - FAN MOTOR MOUNT	4	CWH551106J	←	
	10	PROPELLER FAN ASSY	1	CWH03K1065	←	
	11	NUT - PROPELLER FAN	1	CWH56053J	←	
	12	CONDENSER	1	CWB32C3796	←	
	14	EXPANSION VALVE	1	CWB051016J	←	O
	15	4-WAYS VALVE	1	CWB001057	←	O
	18	HOLDER COUPLING	1	CWH351228A	←	
	19	3-WAY VALVE (GAS)	1	CWB011784	CWB011785	O
	20	2-WAYS VALVE (LIQUID)	1	CWB021180J	←	O
	22	SOUND PROOF BOARD	1	CWH151295	←	
	23	TERMINAL COVER	1	CWH171039A	←	
	24	NUT - TERMINAL COVER	1	CWH7080300J	←	
	25	SENSOR CO – COMP. TEMP.	1	CWA50C2343	←	O
⚠	27	V-COIL COMPLETE (4-WAY VALVE)	1	CWA43C2392	←	O
⚠	28	V-COIL COMPLETE (EXP.VALVE)	1	CWA43C2393	←	O
	30	SENSOR – COMPLETE (AIR TEMP AND PIPE TEMP)	1	CWA50C2710	←	O
⚠	31	REACTOR	1	G0C193J00004	←	O
⚠	33	TERMINAL BOARD ASSY	1	CWA28K1154	←	O
⚠	38	ELECTRONIC CONTROLLER - MAIN	1	ACXA73C04470R	ACXA73C04480R	O
	40	CONTROL BOARD COVER-TOP	1	CWH131333	←	O
	41	CABINET SIDE PLATE (LEFT)	1	CWE041733A	←	
	42	HANDLE	1	CWE161010	←	
	43	CABINET SIDE PLATE (RIGHT)	1	CWE041732A	←	
	45	CABINET FRONT PLATE CO.	1	CWE06K1101	←	
	46	WIRE NET	1	CWD041155A	←	
	47	CABINET TOP PLATE	1	CWE031131A	←	
	48	CONTROL BOARD COVER - COMPLETE	1	CWH13C1308	←	
	49	CONTROL BOARD COVER	1	CWH131409	←	
	58	SOUND PROOF MATERIAL	1	CWG302851	←	
	59	SOUND PROOF MATERIAL	1	CWG302630	←	
	62	DISCHARGE MUFFLER (4-WAYS VALVE)	1	CWB121047	←	
	67	STRAINER	1	CWB111076	←	
	68	DISCHARGE MUFFLER (EXP. VALVE)	1	CWB121021	←	
	69	HEATER	1	CWA341072	←	O
	70	BAG - COMPLETE	1	ACXH82C00350	←	

(NOTE)

- All parts are supplied from PAPAMY, Malaysia (Vendor Code: 00029488).
- “O” marked parts are recommended to be kept in stock.