

Job Name:	
System Reference:	Date:

GENERAL FEATURES

- Compact side discharge outdoor unit
- Wireless or wired remote controller, indoor unit dependent
- Quiet operation
- Automatic fan speed control
- Auto restart following power outage
- Self-check function—integrated diagnostics
- Advanced microprocessor control
- Limited warranty: five years parts and seven years compressors



Outdoor Unit: MXZ-2B20NA-1

ACCESSORIES

- Air Outlet Guide (MAC-856SG)
- 3/8" x 1/2" Port Adapter (MAC-A454JP; for use with 15,000 Btu/h Indoor units)

Specifications			Model Name
Unit Type			MXZ-2B20NA-1
Cooling* (Non-ducted/Ducted)	Rated Capacity	Btu/h	18,000 / 20,000
	Maximum Capacity	Btu/h	20,000 / 20,000
	Total Input	W	1,440 / 2,190
Heating at 47°F* (Non-ducted/Ducted)	Rated Capacity	Btu/h	22,000 / 22,000
	Maximum Capacity	Btu/h	25,000 / 25,000
	Total Input	W	1,650 / 1,780
Heating at 17°F* (Non-ducted/Ducted)	Rated Capacity	Btu/h	12,500 / 12,500
	Total Input	W	1,350 / 1,430
Electrical Requirements	Power Supply	Voltage, Phase, Hertz	208 / 230V, 1-Phase, 60 Hz
	Recommended Fuse/Breaker Size	A	20
	MCA	A	15
Voltage	Indoor - Outdoor S1-S2	V	AC 208 / 230
	Indoor - Outdoor S2-S3	V	DC ±24
Compressor			DC Inverter-driven Twin Rotary
Blower Motor (ECM)		F.L.A.	0.96
Sound Pressure Level (Non-ducted/Ducted)	Cooling	dB(A)	49
	Heating		51
External Dimensions (H x W x D)		In. / mm	27-15/16 x 33-1/16 x 13 / 710 x 840 x 330
Net Weight		Lbs. / kg	130 (59)
External Finish			Munsell No. 3Y 7.8 / 1.1
Refrigerant Pipe Size O.D.	Liquid (High Pressure)	(In. / mm)	1/4 / 6.3
	Gas (Low Pressure)		A,B: 3/8 / 9.52 5
Max. Refrigerant Line Length		Ft.	164
Max. Piping Length for Each Indoor Unit		Ft.	82
Max. Refrigerant Pipe Height Difference	If Indoor Unit is Above Outdoor Unit	Ft.	49
	If Indoor Unit is Below Outdoor Unit		33
Connection Method			Flared
Refrigerant			R410A

(For data on specific indoor units, see the MXZ-B Technical and Service Manual.)

* Rating Conditions per AHRI Standard:

Cooling | Indoor: 80° F (27° C) DB / 67° F (19° C) WB
Cooling | Outdoor: 95° F (35° C) DB / 75° F (24° C) WB

Heating at 47° F | Indoor: 70° F (21° C) DB / 60° F (16° C) WB
Heating at 47° F | Outdoor: 47° F (8° C) DB / 43° F (6° C) WB

Heating at 17° F | Indoor: 70° F (21° C) DB / 60° F (16° C) WB
Heating at 17° F | Outdoor: 17° F (-8° C) DB / 15° F (-9° C) WB

SPECIFICATIONS: MXZ-2B20NA-1, contd.

Operating Range:

		Indoor Intake Air Temp.	Outdoor Intake Air Temp.
Cooling	Maximum	95° F (35° C) DB 71° F (22° C) WB	115° F (46° C) DB
	Minimum	67° F (19° C) DB 57° F (14° C) WB	14° F (-10° C) DB
Heating	Maximum	80° F (27° C) DB 67° F (19° C) WB	75° F (24° C) DB 65° F (18° C) WB
	Minimum	70° F (21° C) DB 60° F (16° C) WB	6° F (-14° C) DB 5° F (-15° C) WB

Energy Efficiencies:

Indoor Unit Type	SEER	EER	HSPF	COP @ 47°F	COP @ 17°F
MSZ-GE09NA-8 x 2	18.0	12.5	8.9	3.9	2.7

Multi-zone Indoor/Outdoor Combination Table

	MSZ-FE*	MSZ-GE*	MFZ*	SEZ*	SLZ*	PCA (A24)*	PLA (A12/18/24)*	PEAD (A24)*
MXZ-2B20NA-1	OK	06/09/12/15 OK 18, 24 NO	09/12 OK 18 NO	09/12/15 OK 18 NO	OK	NO	NO	NO

* Refer to indoor unit submittal.

Notes:

- Minimum of two Indoor Units must be connected to the MXZ-2B20NA-1.
- Minimum installed capacity cannot be less than 12,000 Btu/h.
- There are NO indoor units larger than 24,000 Btu/h that can be connected to MXZ Systems.
- PLA-A12BA can NOT be connected with MXZ-2B20NA-1/MXZ-3B24NA-1/MXZ-3B30NA-1/MXZ-4B36NA-1.
- System can operate with only one Indoor Unit turned on. (see Operation Performance Table next page for single Indoor Unit performance).
- May connect to any style indoor unit or combination.
- Information provided at 208/230V. Refer to the MXZ Outdoor Unit Service Manual for detailed specifications and additional information per Indoor Unit Combination.

Notes:

MXZ-2B20NA-1 OPERATION PERFORMANCE

NON-DUCTED:

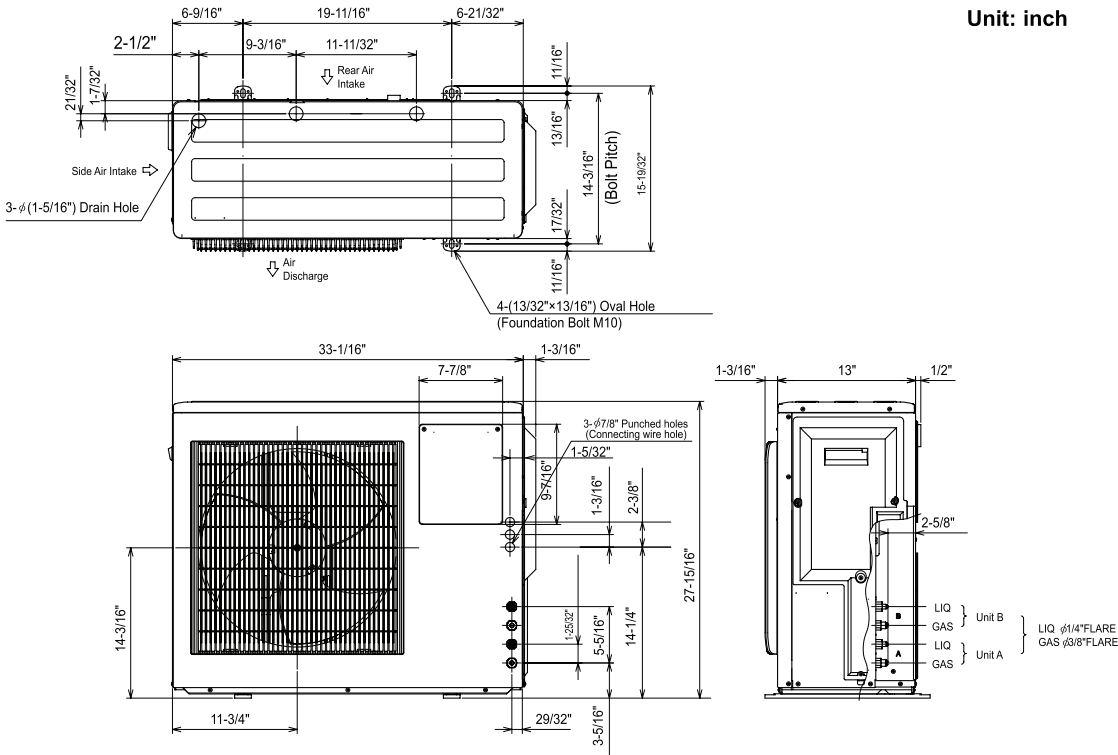
# of indoor unit	Total Nominal Capacity (x1000 Btu/h)	Total Indoor Unit Capacity (Btu/h)	Operational Performance for Indoor Unit Combinations (Unit A + Unit B + Unit C)	Cooling Capacity Range (Btu/h)		
				Heating Capacity Range (Btu/h)		
				Unit A	Unit B	Unit C
1	6	6,000	6	6,000	-	-
		7,400		7,400	-	-
1	9	9,000	9	9,000	-	-
		11,000		11,000	-	-
1	12	12,000	12	12,000	-	-
		13,600		13,600	-	-
1	15	15,000	15	15,000	-	-
		18,000		18,000	-	-
2	12	12,000	6 + 6	6,000	6,000	-
		14,800		7,400	7,400	-
2	15	15,000	6 + 9	6,000	9,000	-
		18,400		7,400	11,000	-
2	18	18,000	6 + 12	6,000	12,000	-
		21,000		7,400	13,600	-
2	18	18,000	9 + 9	9,000	9,000	-
		21,000		10,500	10,500	-
2	21	20,000	6 + 15	5,700	14,300	-
		22,000		6,400	15,600	-
2	21	20,000	9 + 12	8,600	11,400	-
		22,000		9,800	12,200	-
2	24	20,000	9 + 15	7,500	12,500	-
		22,000		8,300	13,700	-
2	24	20,000	12 + 12	10,000	10,000	-
		22,000		11,000	11,000	-

DUCTED:

# of indoor unit	Total Nominal Capacity (x1000 Btu/h)	Total Indoor Unit Capacity (Btu/h)	Operational Performance for Indoor Unit Combinations (Unit A + Unit B + Unit C)	Cooling Capacity Range (Btu/h)		
				Heating Capacity Range (Btu/h)		
				Unit A	Unit B	Unit C
1	9	9,000	9	9,000	-	-
		10,900		10,900	-	-
1	12	12,000	12	12,000	-	-
		13,600		13,600	-	-
1	15	15,000	15	15,000	-	-
		18,000		18,000	-	-
2	18	18,000	9 + 9	9,000	9,000	-
		21,800		10,900	10,900	-
2	21	20,000	9 + 12	8,600	11,400	-
		22,000		9,800	12,200	-
2	24	20,000	9 + 15	7,500	12,500	-
		22,000		8,300	13,700	-
2	24	20,000	12 + 12	10,000	10,000	-
		22,000		11,000	11,000	-

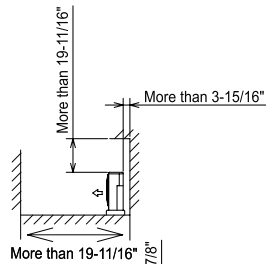
DIMENSIONS: MXZ-2B20NA-1

Unit: inch

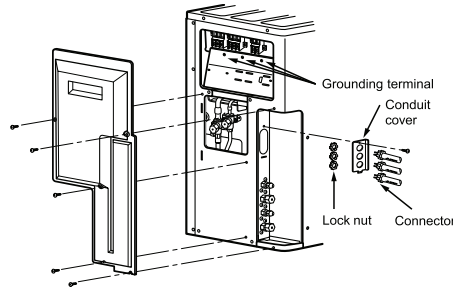
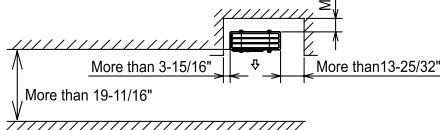


1. Installation space

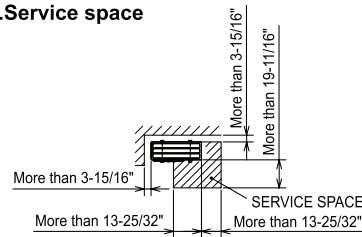
Note : Leave both sides free of obstruction.



Note : Leave overhead free of obstruction.



2. Service space



COOLING & HEATING

1340 Satellite Boulevard, Suwanee, GA 30024
Toll Free: 800-433-4822 www.mehvac.com

