

Revision B:

- The fan guard for MUZ-D30NA, -**1**, -**U1**, -**U2** and MUZ-D36NA, -**1**, -**U1**, -**U2** has been changed.

Please void OBB502 REVISED EDITION-A.

OUTDOOR UNIT PARTS CATALOG

No. OBB502
REVISED EDITION-B

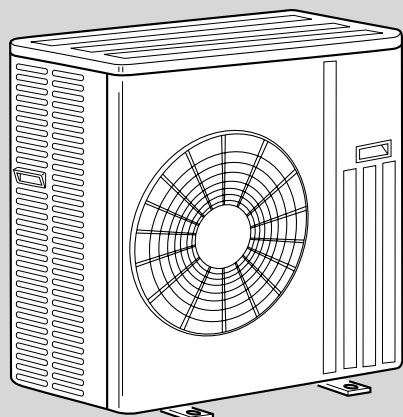
Models

MUZ-D30NA / -1** / -**U1** / -**U2****

MUZ-D36NA / -1** / -**U1** / -**U2****

MUY-D30NA / -1****

MUY-D36NA / -1****



CONTENTS

1. RoHS PARTS LIST..... 2
2. OPTIONAL PARTS..... BACK COVER

SERVICE MANUAL (OBH502)

NOTE:

RoHS compliant products have <G> mark on the spec name plate.

Mr. SLIM™

Revision A:

• MUZ-D•NA-1, -02 and MUY-D•NA-1 have been corrected.

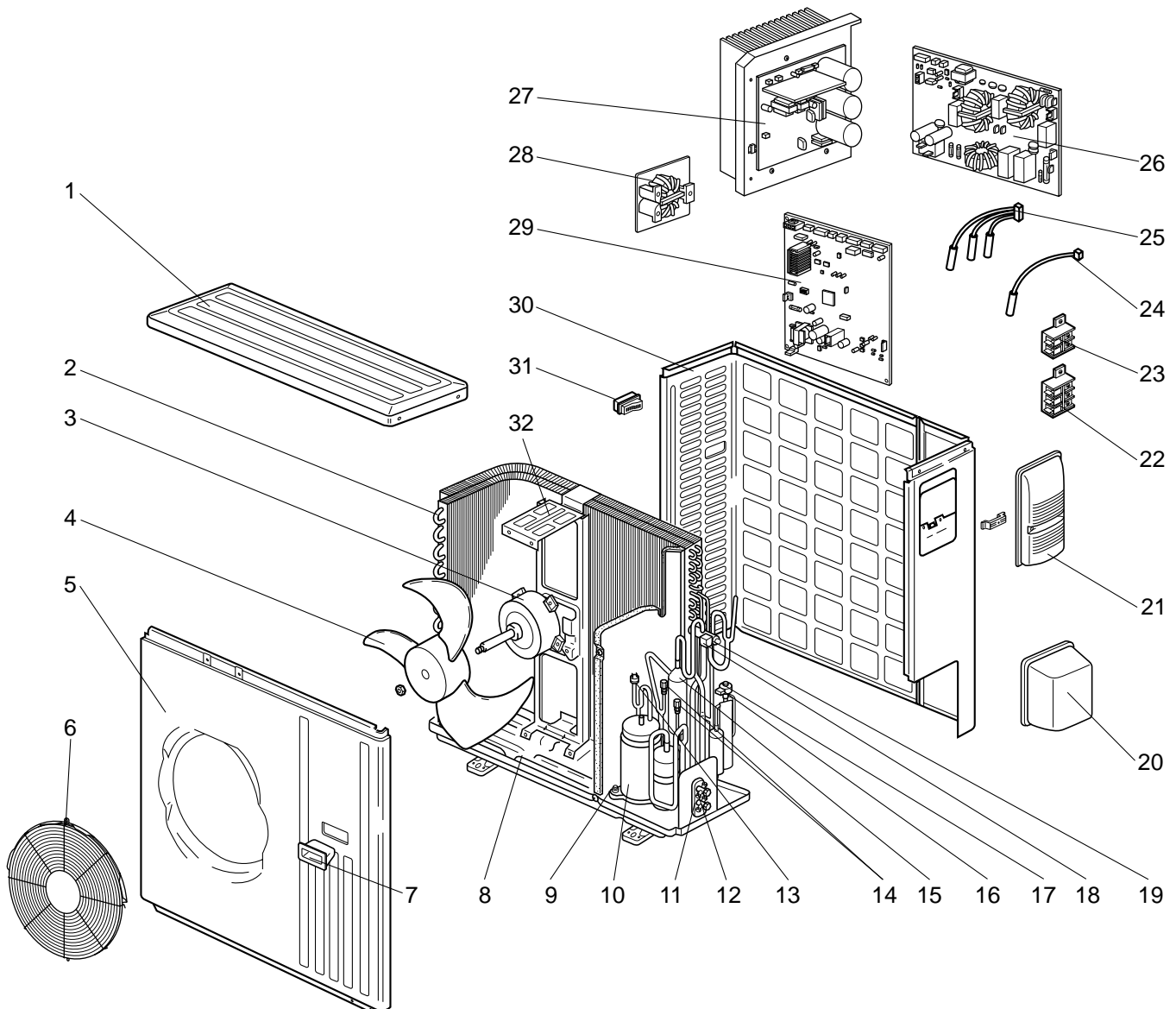
Revision B:

• The fan guard for MUZ-D30NA, -1, -01, -02 and MUZ-D36NA, -1, -01, -02 has been changed.

1 RoHS PARTS LIST

MUZ-D30NA MUZ-D36NA MUY-D30NA MUY-D36NA

1-1. OUTDOOR UNIT STRUCTURAL PARTS, ELECTRICAL PARTS AND FUNCTIONAL PARTS

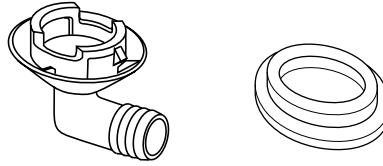


Part number that is circled is not shown in the illustration.

| No. | RoHS | Part No. | Part Name | Symbol in Wiring Diagram | Q'ty/unit | | | | | | | | Remarks | | | | |
|-----|------|-------------|---------------------------------------|--------------------------|-----------|-----|-----|-------|------|-----|-------|-----|---------|-------|---|---|--|
| | | | | | MUZ- | | | | MUJ- | | | | | | | | |
| | | | | | D30NA | | | D36NA | | | D30NA | | | D36NA | | | |
| | | | | | -U1 | -U1 | -U2 | -U1 | -U1 | -U2 | -U1 | -U1 | | | | | |
| 1 | G | E12 819 297 | TOP PANEL | | 1 | 1 | 1 | 1 | 1 | 1 | 1 | 1 | 1 | 1 | 1 | 1 | |
| 2 | G | E12 D20 630 | OUTDOOR HEAT EXCHANGER | | 1 | 1 | 1 | 1 | 1 | 1 | 1 | 1 | | | | | |
| | G | E12 D21 630 | | | | | | | | | | | 1 | 1 | 1 | 1 | |
| 3 | G | E12 A58 301 | OUTDOOR FAN MOTOR | MF | 1 | | 1 | | 1 | | 1 | | 1 | | 1 | | RC0J60-□□ |
| | G | E12 E34 301 | | | | 1 | | 1 | | 1 | | 1 | | 1 | | 1 | |
| 4 | G | E12 851 501 | PROPELLER | | 1 | 1 | 1 | 1 | 1 | 1 | 1 | 1 | 1 | 1 | 1 | 1 | |
| 5 | G | E12 819 232 | CABINET | | 1 | 1 | 1 | 1 | 1 | 1 | 1 | 1 | 1 | 1 | 1 | 1 | |
| 6 | G | E12 D84 521 | FAN GUARD | | 1 | 1 | 1 | 1 | 1 | 1 | 1 | 1 | | | | | Including ice guard |
| | G | E12 819 521 | FAN GUARD | | | | | | | | | | 1 | 1 | 1 | 1 | |
| 7 | G | E12 819 009 | HANDLE | | 1 | 1 | 1 | 1 | 1 | 1 | 1 | 1 | 1 | 1 | 1 | 1 | |
| 8 | G | E12 D20 290 | BASE | | 1 | 1 | 1 | 1 | 1 | 1 | 1 | 1 | 1 | 1 | 1 | 1 | |
| 9 | G | E12 853 506 | COMPRESSOR RUBBER SET | | 3 | 3 | 3 | 3 | 3 | 3 | 3 | 3 | 3 | 3 | 3 | 3 | 3RUBBERS/SET |
| 10 | G | E12 853 900 | COMPRESSOR | MC | 1 | 1 | 1 | 1 | 1 | 1 | 1 | 1 | 1 | 1 | 1 | 1 | TNB220FMCHT |
| 11 | G | E12 A58 661 | STOP VALVE (GAS) | | 1 | 1 | 1 | 1 | 1 | 1 | 1 | 1 | | | | | ø5/8 |
| | G | E12 D21 661 | | | | | | | | | | | 1 | 1 | 1 | 1 | ø5/8 |
| 12 | G | E12 822 662 | STOP VALVE (LIQUID) | | 1 | 1 | 1 | 1 | 1 | 1 | 1 | 1 | | | | | ø3/8 |
| | G | E12 819 662 | | | | | | | | | | | 1 | 1 | 1 | 1 | ø3/8 |
| 13 | G | E12 853 646 | HIGH PRESSURE SWITCH | | 1 | 1 | 1 | 1 | 1 | 1 | 1 | 1 | 1 | 1 | 1 | 1 | |
| 14 | G | E12 A49 641 | SERVICE PORT | | 2 | 2 | 2 | 2 | 2 | 2 | 2 | 2 | 2 | 2 | 2 | 2 | 1 PC/SET |
| 15 | G | E12 D20 299 | OIL SEPARATOR | | 1 | 1 | 1 | 1 | 1 | 1 | 1 | 1 | 1 | 1 | 1 | 1 | |
| 16 | G | E12 851 493 | EXPANSION VALVE COIL | LEV | 1 | 1 | 1 | 1 | 1 | 1 | 1 | 1 | 1 | 1 | 1 | 1 | |
| 17 | G | E12 819 640 | EXPANSION VALVE | | 1 | 1 | 1 | 1 | 1 | 1 | 1 | 1 | 1 | 1 | 1 | 1 | |
| 18 | G | E12 A58 490 | R.V. COIL | 21S4 | 1 | 1 | 1 | 1 | 1 | 1 | 1 | 1 | | | | | |
| 19 | G | E12 A56 961 | 4-WAY VALVE | | 1 | 1 | 1 | 1 | 1 | 1 | 1 | 1 | | | | | |
| 20 | G | E12 819 650 | VALVE COVER | | 1 | 1 | 1 | 1 | 1 | 1 | 1 | 1 | 1 | 1 | 1 | 1 | |
| 21 | G | E12 D20 245 | SERVICE PANEL | | 1 | 1 | 1 | 1 | 1 | 1 | 1 | 1 | 1 | 1 | 1 | 1 | |
| 22 | G | E12 935 374 | TERMINAL BLOCK | TB2 | 1 | 1 | 1 | 1 | 1 | 1 | 1 | 1 | 1 | 1 | 1 | 1 | 3 P |
| 23 | G | E12 D20 374 | TERMINAL BLOCK | TB1 | 1 | 1 | 1 | 1 | 1 | 1 | 1 | 1 | 1 | 1 | 1 | 1 | 2 P |
| 24 | G | E12 935 309 | AMBIENT TEMPERATURE THERMISTOR | RT65 | 1 | 1 | 1 | 1 | 1 | 1 | 1 | 1 | 1 | 1 | 1 | 1 | |
| 25 | G | E12 851 308 | THERMISTOR SET | RT61,RT62,RT68 | 1 | 1 | 1 | 1 | 1 | 1 | 1 | 1 | | | | | DEFROST, DISCHARGE, OUTDOOR HEAT EXCHANGER |
| | G | E12 A53 308 | | RT62,RT68 | | | | | | | | | 1 | 1 | 1 | 1 | DISCHARGE, OUTDOOR HEAT EXCHANGER |
| 26 | G | E12 D20 444 | NOISE FILTER P.C. BOARD | | 1 | 1 | 1 | 1 | 1 | 1 | 1 | 1 | | | | | |
| | G | E12 D21 444 | | | | | | | | | | | 1 | 1 | 1 | 1 | |
| 27 | G | E12 D20 440 | POWER BOARD | | 1 | 1 | 1 | 1 | 1 | 1 | 1 | 1 | 1 | 1 | 1 | 1 | Including heat sink and RT64 |
| 28 | G | E12 D20 337 | REACTOR | L | 1 | 1 | 1 | 1 | 1 | 1 | 1 | 1 | 1 | 1 | 1 | 1 | |
| 29 | G | E12 C87 450 | OUTDOOR ELECTRONIC CONTROL P.C. BOARD | | 1 | | | | | | | | | | | | |
| | G | E12 D22 450 | | | | 1 | | | | | | | | | | | |
| | G | E12 D20 450 | | | | | 1 | | | | | | | | | | |
| | G | E12 D23 450 | | | | | | 1 | | | | | | | | | |
| | G | E12 C91 450 | | | | | | | | | 1 | | | | | | |
| | G | E12 D21 450 | | | | | | | | | | | | | 1 | | |
| | G | E12 E62 450 | | | 1 | | | | | | | | | | | | |
| | G | E12 E66 450 | | | | 1 | | | | | | | | | | | |
| | G | E12 E63 450 | | | | | 1 | | | | | | | | | | |
| | G | E12 E67 450 | | | | | | 1 | | | | | | | | | |
| 30 | G | E12 D20 233 | BACK PANEL (OUT) | | 1 | 1 | 1 | 1 | 1 | 1 | 1 | 1 | 1 | 1 | 1 | 1 | |
| 31 | G | E12 817 009 | HANDLE | | 1 | 1 | 1 | 1 | 1 | 1 | 1 | 1 | 1 | 1 | 1 | 1 | |
| 32 | G | E12 851 515 | MOTOR SUPPORT | | 1 | 1 | 1 | 1 | 1 | 1 | 1 | 1 | | | | | |
| | G | E12 D21 515 | | | | | | | | | | | 1 | 1 | 1 | 1 | |
| 33 | G | E12 784 382 | FUSE | F801 | 1 | 1 | 1 | 1 | 1 | 1 | 1 | 1 | 1 | 1 | 1 | 1 | T3.15AL250V |
| 34 | G | E17 250 382 | FUSE | F65, F66 | 1 | 1 | 1 | 1 | 1 | 1 | 1 | 1 | 1 | 1 | 1 | 1 | T6.3AL250V |
| 35 | G | E12 661 385 | VARISTOR | | 1 | 1 | 1 | 1 | 1 | 1 | 1 | 1 | 1 | 1 | 1 | 1 | |
| 36 | G | E12 977 385 | FUSE & VARISTOR SET | F64 | 1 | 1 | 1 | 1 | 1 | 1 | 1 | 1 | 1 | 1 | 1 | 1 | |
| 37 | G | E12 853 936 | CAPILLARY TUBE | | 1 | 1 | 1 | 1 | 1 | 1 | 1 | 1 | 1 | 1 | 1 | 1 | O.D. 0.071 × I.D. 0.024 × 39-3/8 |
| 38 | G | E12 861 936 | CAPILLARY TUBE | | 1 | 1 | 1 | 1 | 1 | 1 | 1 | 1 | 1 | 1 | 1 | 1 | O.D. 0.142 × I.D. 0.094 × 1-31/32 |

2-1. DRAIN SOCKET ASSEMBLY

| Model | Parts No. |
|------------------------------|-----------|
| MUZ-D30/36NA MUY-D30/36NA | MAC-811DS |



 **mitsubishi electric corporation**
HEAD OFFICE: TOKYO BLDG., 2-7-3, MARUNOUCHI, CHIYODA-KU, TOKYO 100-8310, JAPAN